

## Series W-H77X-16Q

### Wafer Double Door Check Valve

#### Size : DN50-DN600

The Watts W-H77X Wafer Style Check Valve is designed to automatically open the valve by the flow of the medium itself, and close the disc relying on the spring torsion and medium flow, which is used to prevent the backflow of the medium. It's generally used in building services, water treatment, plate heat exchanger, etc.

#### Features

- Light weight and compact structure
- Rely on the torsion spring to quickly close on its own
- Can be installed in both horizontal and vertical pipes
- Safe and reliable performance, good anti-interference performance

#### Pressure - Temperature

- Nominal Pressure: PN16
- Temperature Range: -10°C ~ 120°C

#### Test Pressures

##### Hydraulic

Shell: 24bar

Seat: 17.6bar

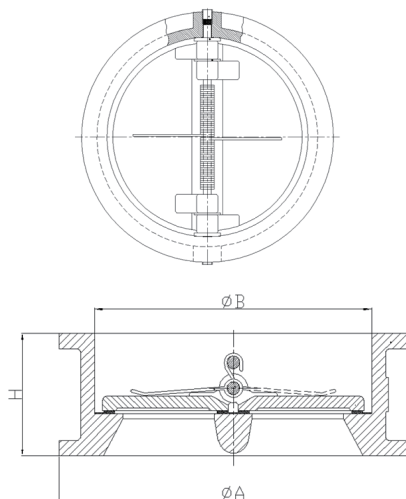
#### Material

NO.	Component	Material
1	Body	Ductile Iron
2	Seat	EPDM
3	Disc	Stainless Steel (SS304)
4	Spring	Stainless Steel (SS304)
5	Valve Shaft	Stainless Steel (SS410)

#### Installation Dimension

Connection Dimension: EN558-1 series 16

Dimension (mm)	DN (mm)															
	50	65	80	100	125	150	200	250	300	350	400	450	500	600		
A	107	127	142	162	192	218	273	328	378	438	489	539	594	695		
B	65	80	94	117	145	170	224	265	310	360	410	450	505	624		
H	43	46	64	64	70	76	89	114	114	127	140	152	152	178		



#### Specification

- Connection Standard: EN1092-2
- Connection Type: Wafer
- Medium: water

#### Characteristic Curve

